

# SEAL SUPPLY SYSTEM / BARRIER/- BUFFER FLUID SYSTEM

ADV

IN APOLLO DESIGN AND ALSO  
ACCORDING TO API 682

## Design data

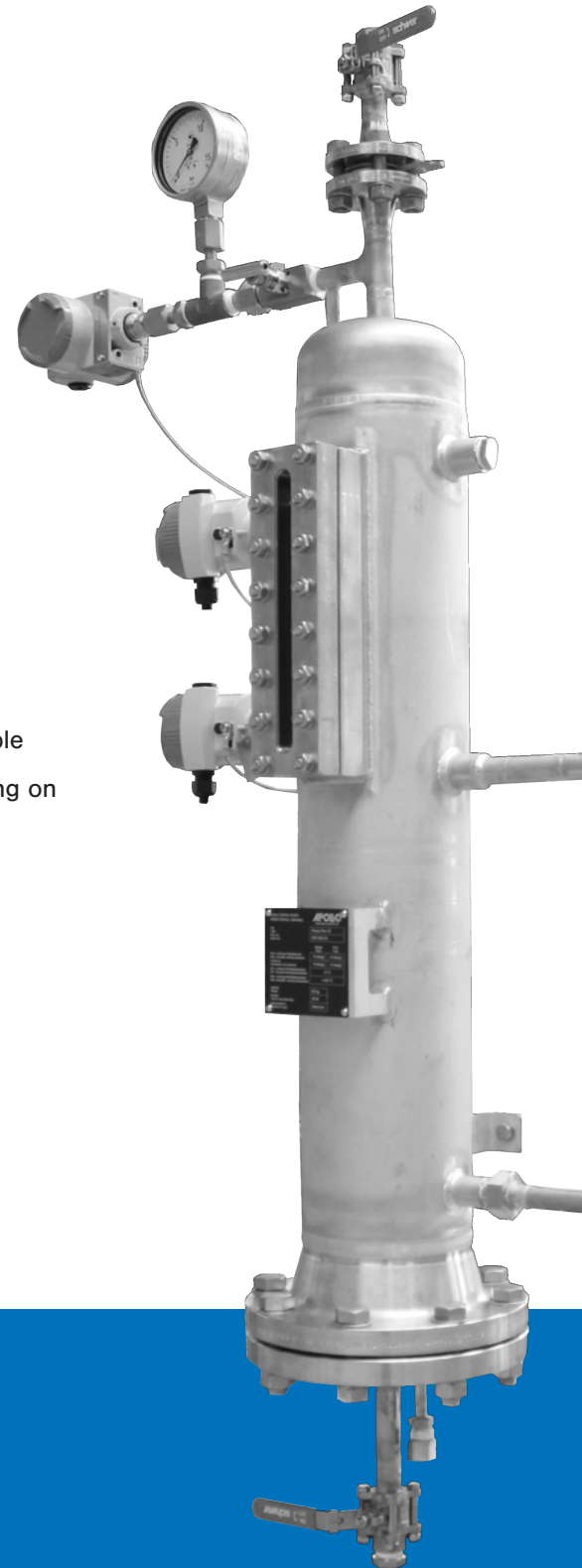
- Mechanical seal piping plan: Plan 52 / 53A = ADV-T  
Plan 53B / 53C = ADV-C  
Plan 54 = ADV-F
- Volume: up to 100 liter for ADV-T & ADV-C  
up to 500 liter for ADV-F
- Design temperature: -60...+200 °C for ADV-T & ADV-C  
+15...+100 °C for ADV-F
- Design pressure: up to 100 bar(g)
- Flange class: ASME B16.5 R.F.
- Cooling power: up to 30 kW
- Design codes: API 682 last edition, PED 2014/68/EU,  
DIN EN13480-5
- Explosion protection: Ex II 2G c IIC Tx
- Redervoir: bottom-flanged or bottom-welded possible
- Coating system: pickled and passivated, additional coating on  
request

## Materials

- Pipes & Fittings: 316L / 316Ti
- Flanges: 316L
- Bolts: A2-70
- Nuts: A4
- Washers: A2
- Gaskets: flat gaskets or spiral wound gaskets

## Type Series:

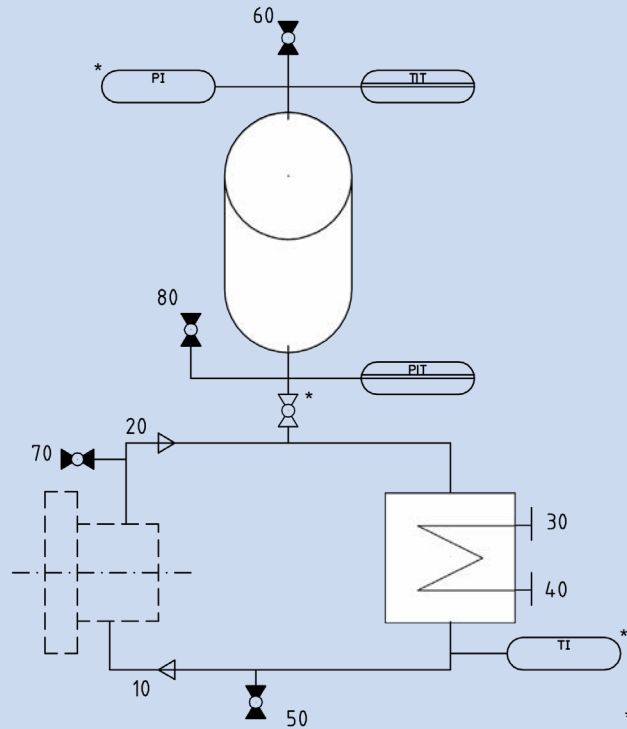
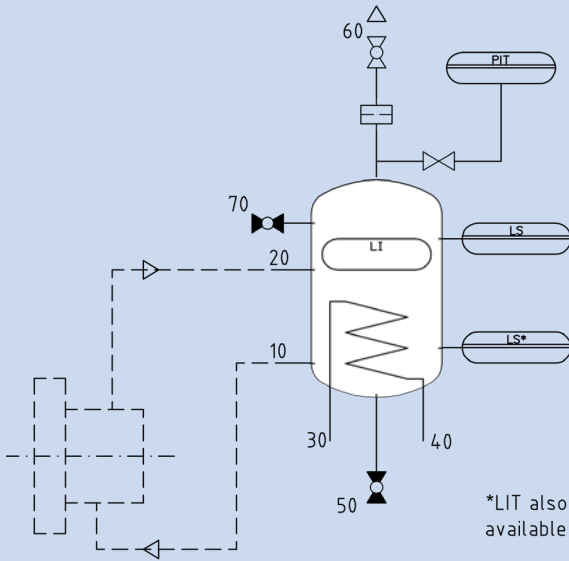
- ADV-T - Thermosyphon Seal Supply System
- ADV-C - Closed Loop Seal Supply System
- ADV-F - Forced Circulation Seal Supply System



Plan 52

Plan 53A

Plan 53B



Plan 53C on request available.

Position	Description
10	from mechanical seal
20	to mechanical seal
30	cooling water inlet
40	cooling water outlet
50	drain
60	Plan 52/53A: to collection system Plan 53A: from external pressure source Plan 53B: bladder charge connection
70	Plan 52: make-up buffer fluid Plan 53A/53B: make-up barrier fluid
80	vent

