

APOLO

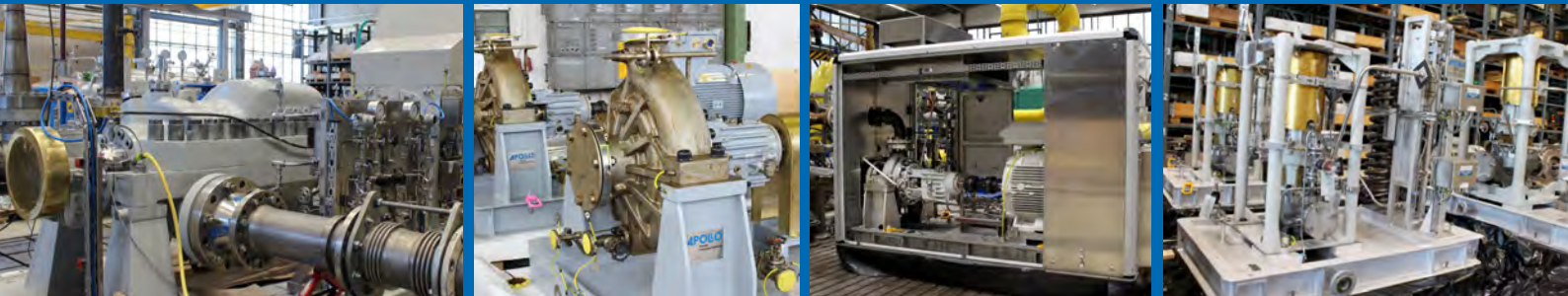
Pumps | Pumping Systems

OFFSHORE REFERENCES



THE RIGHT PUMP UNIT SOLUTION FOR ANY REQUIREMENT

Apollo has been a leading player in the offshore market for many years, specialising in the manufacture of high quality pumps and pumping systems to API 610 standards for a wide range of offshore applications. Apollo's extensive expertise enables it to respond effectively to specific customer requirements with customised solutions.



OH
overhung



BB
between-bearing

Systems
Pumping Stations



PRODUCTS

VS
vertical suspended



SEAWATER BOOSTER PUMP

acc. to API 610 | OH2

Platform | North Sea

- APOLLO pump type: **KRHA-250/400-618/CN**
- Pump power: 191 kW (970 m³/h of 56 m)
- with customized pipework solution (Top-Top connection)
- design comply with NORSOK standard



WATER INJECTION PUMP

acc. to API 610 | BB5

Platform | Malaysia

- APOLLO pump type: **TGD-50B/10-618/CN**
- Pump power: 369 kW (58 m³/h of 1506 m)
- with turbo gear box
- lube oil system
- cooling system
- assembling jig



CONDENSATE RETURN PUMP

acc. to API 610 | OH3

FPSO | North Sea

- APOLLO pump type: **KRI-25/180-608/CN**
- Pump power: 250 kW (374 m³/h of 190 m)
- Material D-1 acc. to NORSOK
- with seal supply system



UTILITY SEAWATER PUMP

acc. to API 610 | VS6

Platform | North Sea

- APOLLO pump type: **HPTV-150/2-618/CN**
- Pump power: 250 kW (374 m³/h of 190 m)
- Material D-2 acc. to NACE



HIGHLIGHTS FROM APOLLO'S ACTIVITIES IN THE OFFSHORE SECTOR

The first Hot Oil Injection Pump was put into operation on an FPSO in India.

2007

The first special designed SRU Feed Pumps for FPSO's in Ghana and Brazil.

2009

Apollo's first vertical multistage pump for a Norwegian platform.

2012

Single-stage Process Pump Package for Santos Basin.

2008

The first special design BB2 Wet Gas Scrubber Recycle Pump for Platform in Norway.

2011

A large pump package, including a special water jetting pump (API type BB5), was delivered to an oil and gas field in the Norwegian sector of the North Sea.

Three large diesel high-pressure circulation pumps (API 610, BB5) were supplied by Apollo for an FPSO in the Tano Basin, located off the coast of Ghana.

2015

Fabrication and delivery of a special SRP feed pump, BB2 pump as a vertical, single-stage, double-suction process pump for a platform on an oil and gas field in the Norwegian Sea.

2016

Supply of more than 20 single-stage overhung pumps for a number of different large-scale offshore projects in

Delivery of 37 process pumps to the third largest oil field on the Norwegian continental shelf, as well as to an FPSO located on this oil field. A total of 47 process pumps were supplied by Apollo for use in offshore applications in Norway and Malaysia.

2019

The largest vertical multistage high-pressure pump for offshore has been delivered.

2013

The first process pumps with titanium casings for an offshore application have been delivered. The OH3 pumps are in operation on a platform in the northern part of the Norwegian North Sea.

Delivery of a special high speed water injection pump with a turbo gearbox and lubrication oil system for an offshore oil field in the shallow waters of the Sabah Delta Basin.

2014

BB1 process pumps were supplied for an offshore application by Apollo.

2023

Apollo supplied several customised solutions, including a vertical OH2 pump with a lubricating oil system and a vertical BB1 pump for use as a firefighting pump. Another special delivery was a high-capacity BB3 oil circulation pump equipped with a lube oil system.

2024

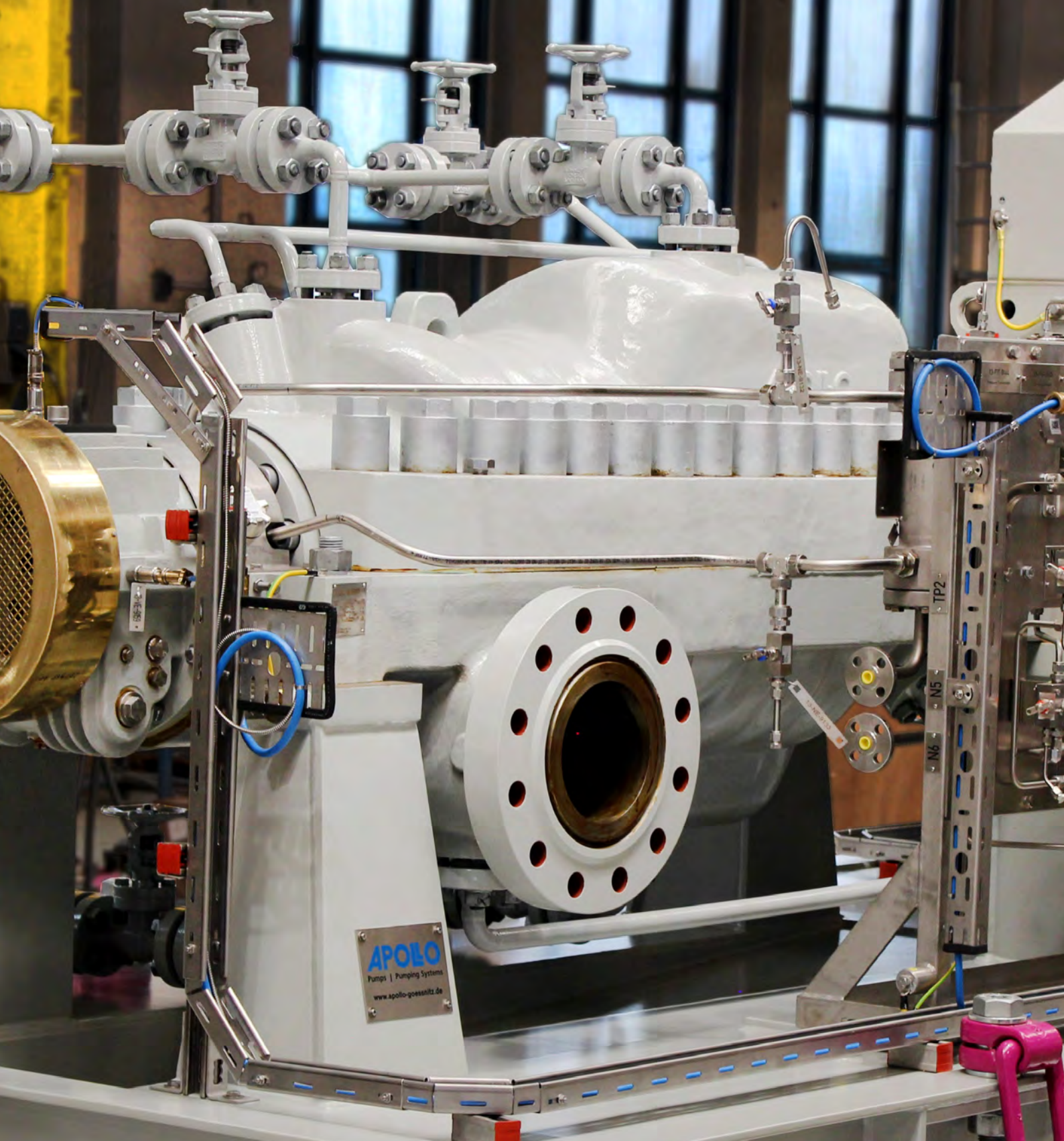
Several large offshore projects are being delivered for Norwegian platforms and the largest oil field in the United Kingdom. These include one of the largest BB5 high-pressure pumps with a back-to-back design that Apollo has ever developed and built for use in offshore applications.

2025

Apollo supplied 30 process pumps for an oil field located in the southern part of the Norwegian sector of the North Sea.

OFFSHORE REFERENCES

PRODUCTS MADE IN GERMANY



HIGH CAPACITY OIL CIRCULATION PUMP
acc. to API 610 | BB3 | FPSO | North Sea

- APOLLO pump type: **AMG-150L/8x350-308/CN**
- Pump power: 941 kW (319 m³/h of 1015 m)
- with seal supply system

SULPHATE REMOVAL FEED PUMP

acc. to API 610 | BB2

Platform | North Sea

- APOLLO pump type: **ZPR-150/500-618/CN**
- Pump power: 694 kW (555 m³/h of 341 m)
- Material: super duplex acc. to NORSOK

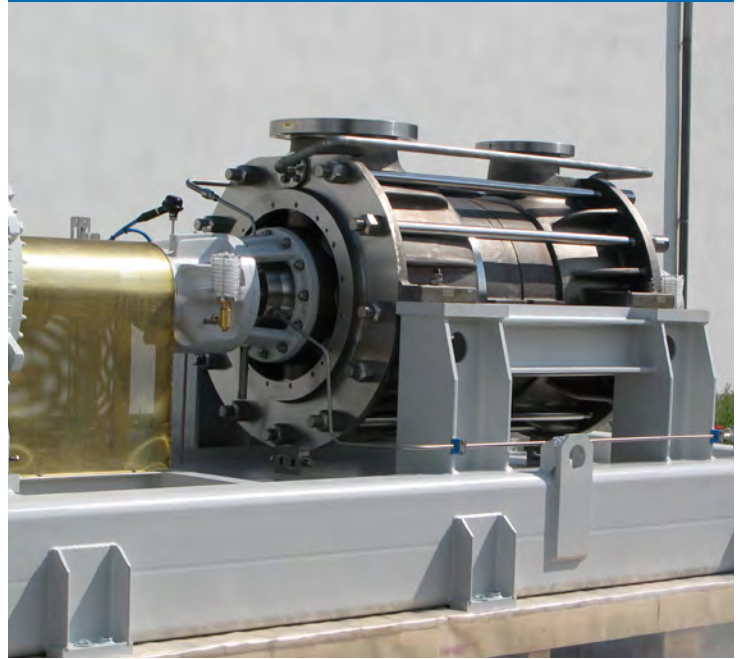


SRU FEED PUMP

acc. to API 610 | BB4

FPSO | Ghana

- APOLLO pump type: **GMHD-200B/4-608/CN**
- Pump power: 677 kW (536 m³/h of 335 m)
- Material: D-1 acc. to API



SRP FEED PUMP

acc. to API 610 | BB2

Platform | North Sea

- APOLLO pump type: **ZPRV-150/500-618/CN**
- special design as vertical BB2 pump
- Pump power: 448 kW (445 m³/h of 279 m)

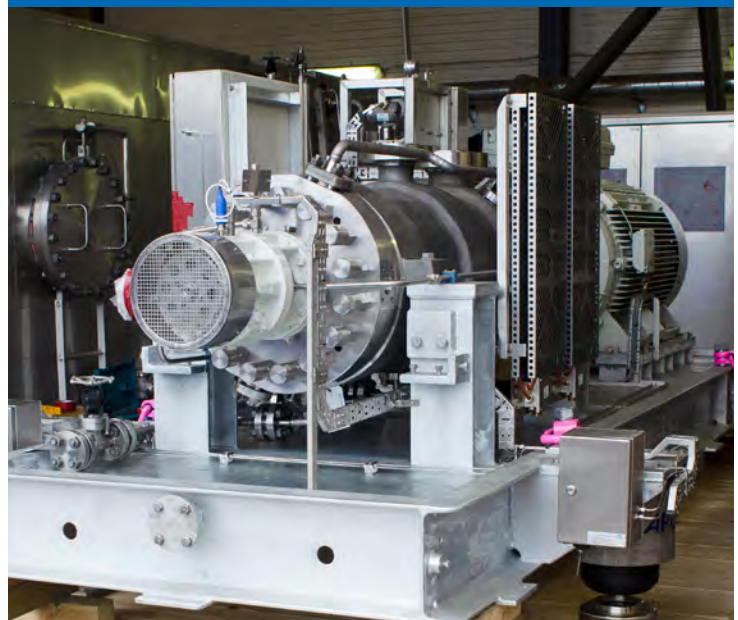


WATER JETTING PUMP

acc. to API 610 | BB5

Platform | Norway

- APOLLO pump type: **TGC-50B/14-708/CN**
- Pump power: 234 kW (40 m³/h of 1315 m)
- materials, welding and painting acc. to NORSOK
- with TS-system
- with noise enclosure



FEED PUMP acc. to API 610 | BB2 FPSO | Asia

- APOLLO pump type: **KGRD-200/600-508/CN**
- Pump power: 914 kW (740 m³/h of 350 m)
- Material: A-8 acc. to API



HEATING MEDIUM CIRCULATION PUMP acc. to API 610 | BB5 Platform | North Sea

- APOLLO pump type: **TGD-50B/18-608/CN**
- Pump power: 259 kW (50 m³/h of 1200 m)
- Medium: demin. water with MEG (-10 °C)
- with seal supply system
- with noise enclosure



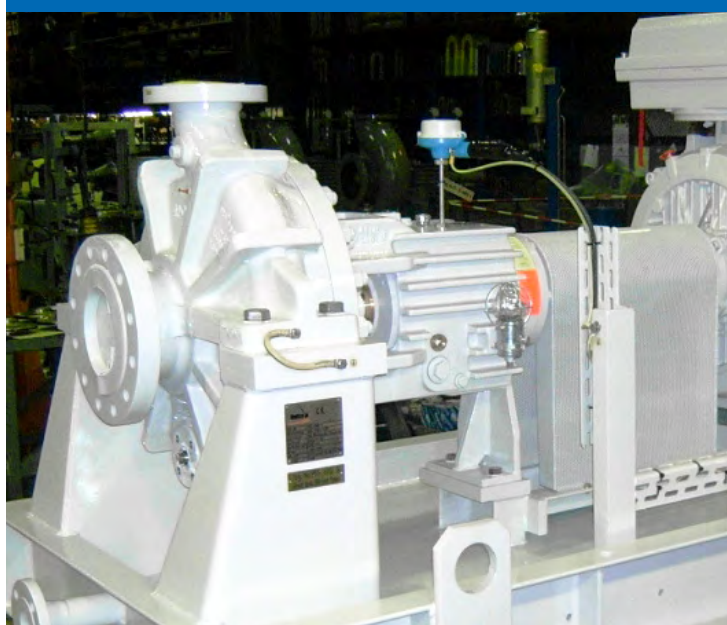
MEG PUMP acc. to API 610 | VS4 Platform | North Sea

- 8 pcs of APOLLO pump type **KRHV**
- Pump power: up to 31 kW
- Q: up to 75 m³/h
- H: up to 108 m



MEG RECYCLE PUMP acc. to API 610 | OH1 FPSO | Brazil

- APOLLO pump type: **KRP-200/400**
- Liquid: 125 °C MEG
- Pump power: 147 kW (570 m³/h of 65 m)
- 12 pcs of Apollo pumps (KRP-OH1; KRH-OH2) for Santos Basin Field

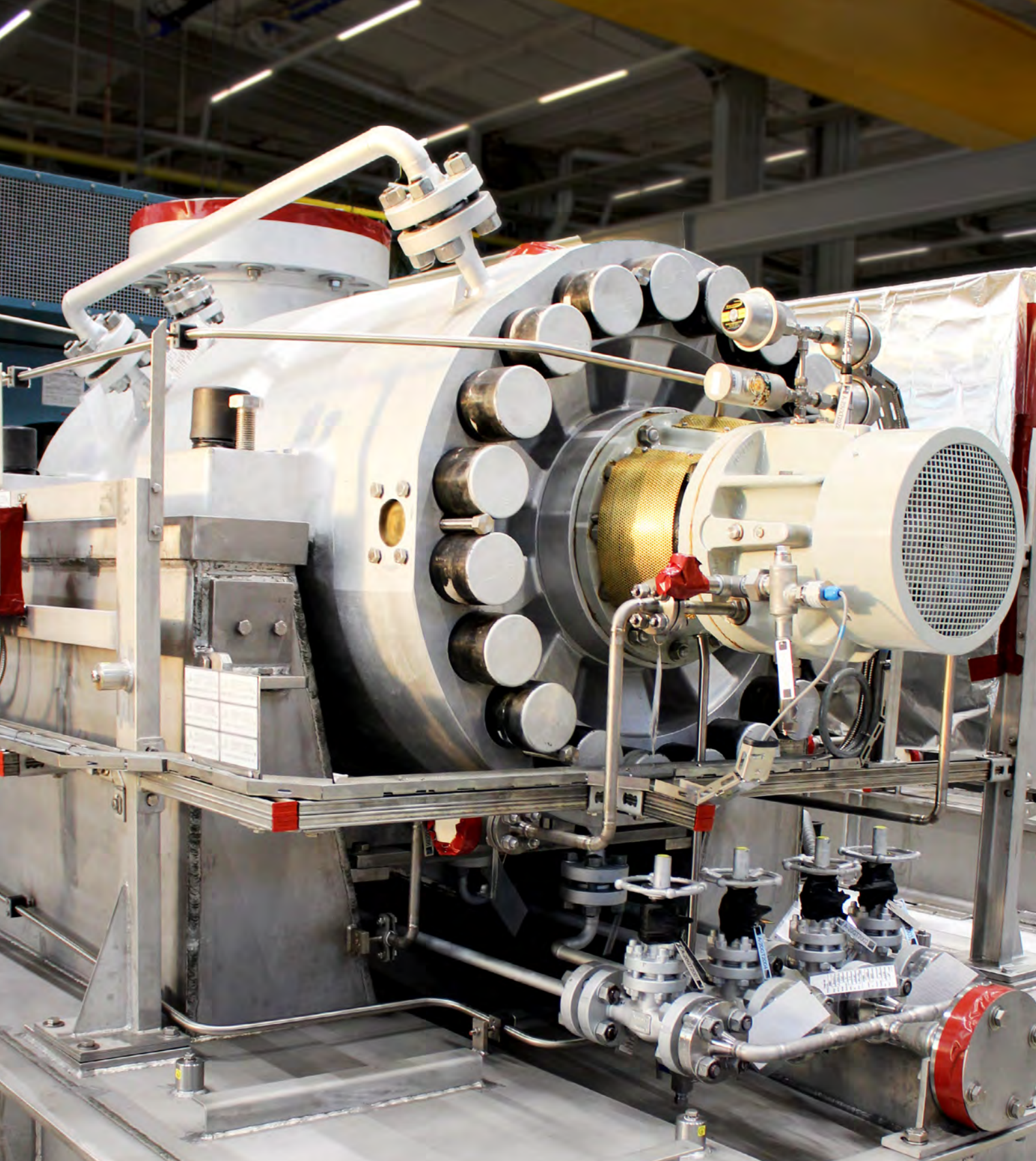


JET WATER PUMP

acc. to API 610 | OH2 | Platform | North Sea

- APOLLO pump type: **KRV-40A/280-608/CN**
- special design as vertical OH2 pump
- Pump power: 36 kW (50 m³/h of 105 m)





LIQUID EXPORT PUMP

acc. to API 610 | BB5 | Unmanned Process Platform | North Sea

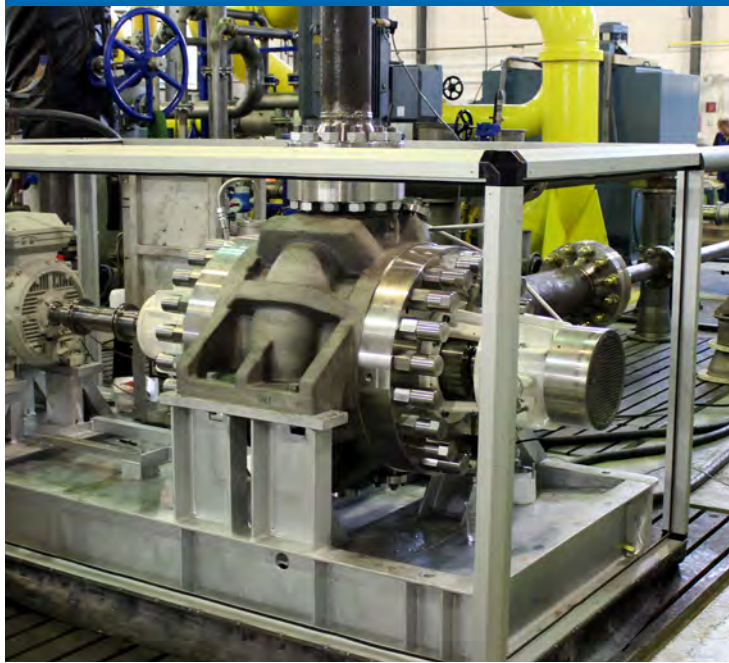
- APOLLO pump type: **TGD-200F/5-608/CN**
- Pump power: 1013 kW (620 m³/h of 683 m)
- with seal supply system
- with noise enclosure

WET GAS SCRUBBER RECYCLE

PUMP acc. to API 610 | BB2

Platform | North Sea

- APOLLO pump type: **ZPR-150/400-708/CN**
- special design (very high casing pressure of 160 bar)
- material acc. to NORSOK
- with noise enclosure

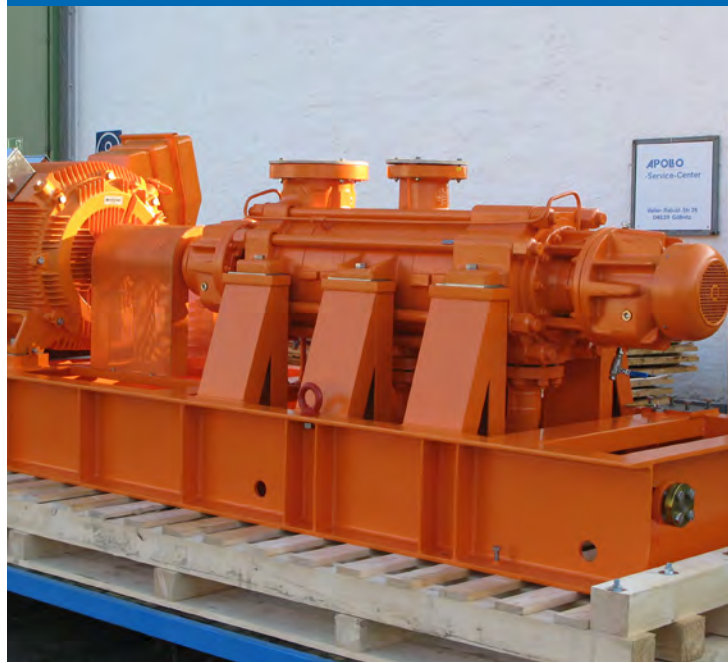


HOT OIL INJECTION PUMP

acc. to API 610 | BB4

FPSO | India

- APOLLO pump type: **GPB-100/6-308/CN**
- Pump power: 682 kW (200 m³/h of 1076 m)



UF CIP PUMP

acc. to API 610 | OH3

Platform | North Sea

- APOLLO pump type: **KRI-200/320-999/CN**
- Material: titanium 3.1 T02
- Pump power: 39 kW (240 m³/h of 40 m)
- with noise enclosure

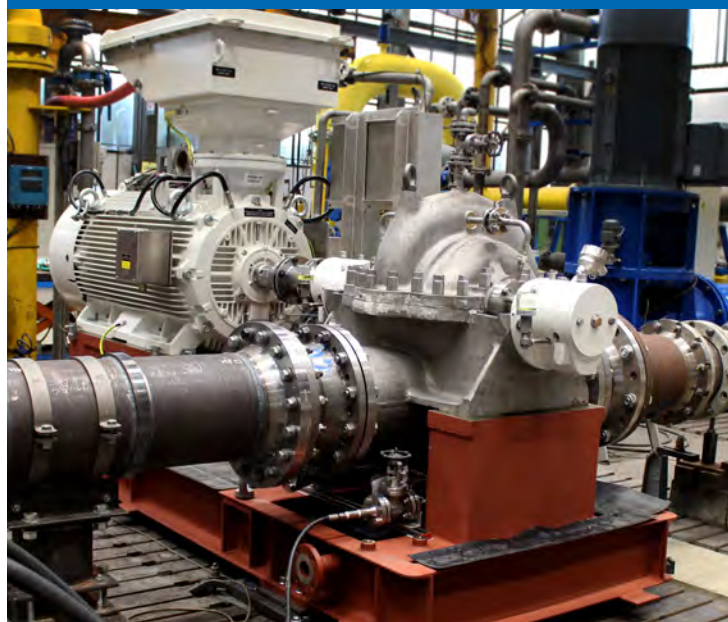


COOLING MEDIUM PUMP

acc. to API 610 | BB1

Platform | North Sea

- APOLLO pump type: **ZMLK-300/315-608/CN**
- Pump power: 263 kW (1400 m³/h of 48 m)



CUSTOMER-SPECIFIC SOLUTIONS FOR PUMPS AND SYSTEM ENGINEERING

Materials acc. to API, NORSOK
or NACE like:

- Titanium
- Super Duplex
- Duplex
- 316 AUS
- 12% Chromium Steel
- Carbon Steel
- Cast Iron

Special Equipment like:

- Lube Oil System acc. to API 614
- Gear Boxes acc. to API 613/677
- Noise Enclosure acc. to NORSOK
- Seal Supply System acc. API 682



Apollo Gößnitz GmbH
Walter-Rabold-Strasse 26
04639 Gößnitz / Germany
Phone: +49 34493 77 0
Fax: +49 34493 77 210
E-Mail: sales@apollo-goessnitz.de

www.apollo-goessnitz.de

f @ in